

Ford Focus MK2

Front Lower Subframe X Brace



Tools Required: Breaker bar, Torque Wrench, 21MM and 13MM



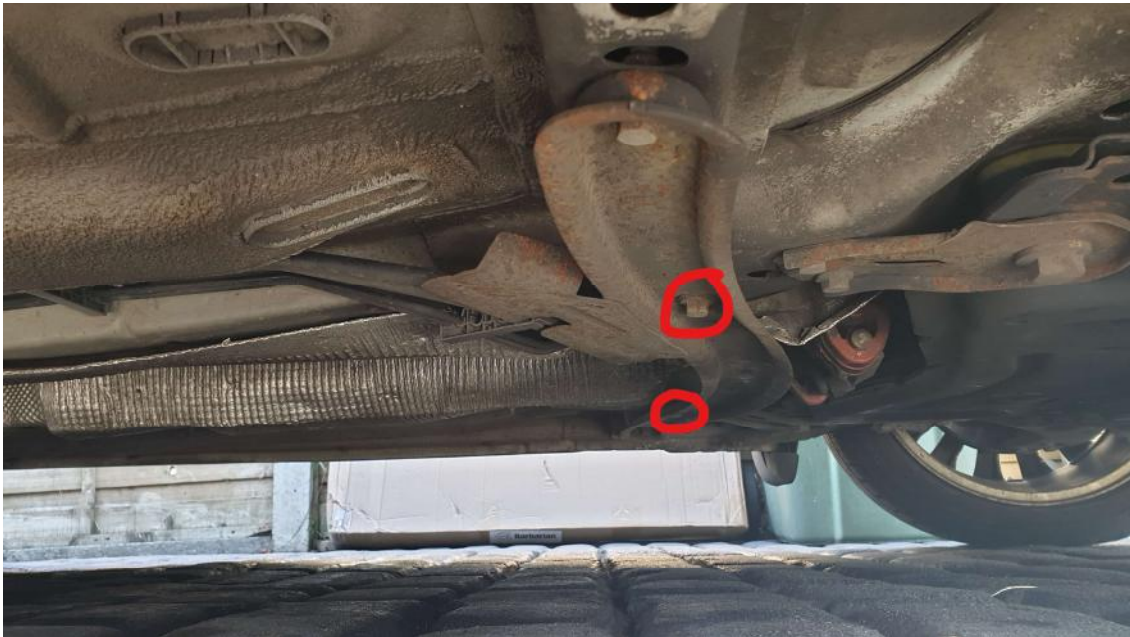
Job time approx. 10-20 Mins

Step 1.

Lift your car either on a car lift or using a jack and jack stands.

Step 2.

Remove the inner 2 13MM bolts that hold the standard cross brace onto the chassis. Note: Keep the bolts as you will need them later, also if you are also fitting the main front X brace you will need to remove all 4 bolts at this point and remove the standard brace.



Step 3.

Remove the 2 21MM subframe bolts, you will probably need a breaker bar to remove it.



Step 4.

Offer up the X brace and hand tighten all 4 bolts starting with the 2 21mm subframe bolts.





Step 5.

Torque up the 21MM subframe bolt to 148 ft-lb, then snug up the 13MM bolts.